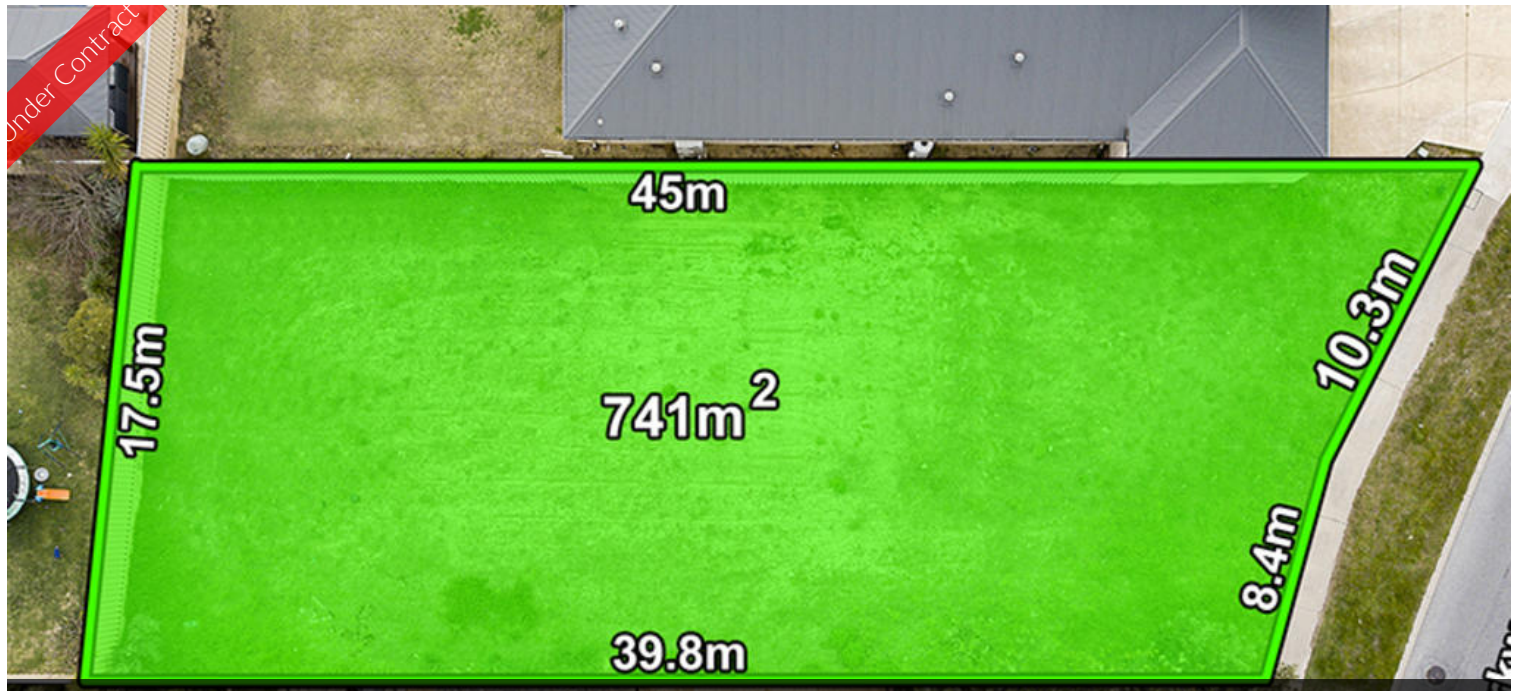
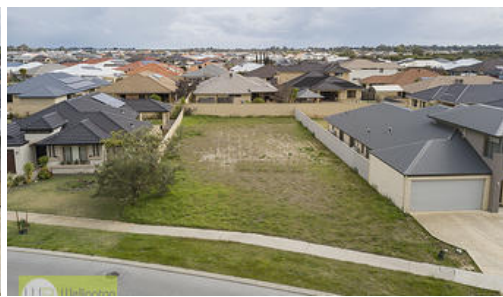


Under Contract



44 Castlewood Pkwy, Southern River



BUILD YOUR CASTLE ON CASTLEWOOD!

If you're looking for a BIG block of land (741 sqm), this might be just what you've been looking for! Build your dream house in one of the best streets in Bletchley Park (an established residential community of over 700 homes in the hear) Directly opposite a beautiful nature reserve with fantastic walkways, and just down the road from the stunning lake in Castlewood Parkway Reserve, this fabulous location would appeal to anyone wanting a big block to build their fabulous new family home on.

Bletchley Park is located in 50 hectares of beautiful bushland, parks and wetlands. It contains 6 neighbourhoods that are linked together by landscaped walkways, all leading to a fantastic lake in the middle, which is approximately 200 metres down the road from this block of land!

This location is perfect for families who want a great lifestyle with plenty of exercise and recreation options.

There are also 2 primary schools and multiple colleges nearby, as well as an Early Learning Centre and a childcare centre. Plenty of options for your childrens' education.

The above information provided has been furnished to us by the vendor/s. We have not verified whether or not that information is accurate and do not have any belief in one way or the other in its accuracy. We do not accept any responsibility to any person for its accuracy and do no more than pass it on. All interested parties should make and rely upon their own inquiries in order to determine whether or not this information is in fact accurate.

Price	SOLD VIA OPEN NEGOTIATION
Property Type	residential
Property ID	691
Land Area	741 m2

AGENT DETAILS

Murray Wellington - 0409 990 975

OFFICE DETAILS

Canning Vale
4/288 Amherst Rd Canning Vale WA
6155 Australia
08 9455 6588

